

#1

Hammer Dream Home Challenge Ignite Your Imagination!

CHECKLIST & SUBMISSION INSTRUCTIONS

Design the home of your dreams! The only design “rules” are to draw your home to **one fourth inch scale** using **17” x 22” graph paper**. This is YOUR dream home. You design it your way. Make it as simple or complex as you like. Most importantly, have fun!

GUIDELINE CHECKLIST:

- Use 17” x 22” graph paper
- Using a pencil, design your dream home on the graph paper using 1/4” scale
- Write room/wall dimensions neatly on graph paper (example attached)
- On the top of your house design, neatly write your **name, grade, teacher’s name, and school** and **1/4 inch = 1 foot** on the graph paper
- Interior Design Elements drawn to scale are optional and not a requirement
- Fill out your dream home dimensions on the following page (#2) (example attached)
- Submit your drawing via Submission Instructions below

SUBMISSION INSTRUCTIONS

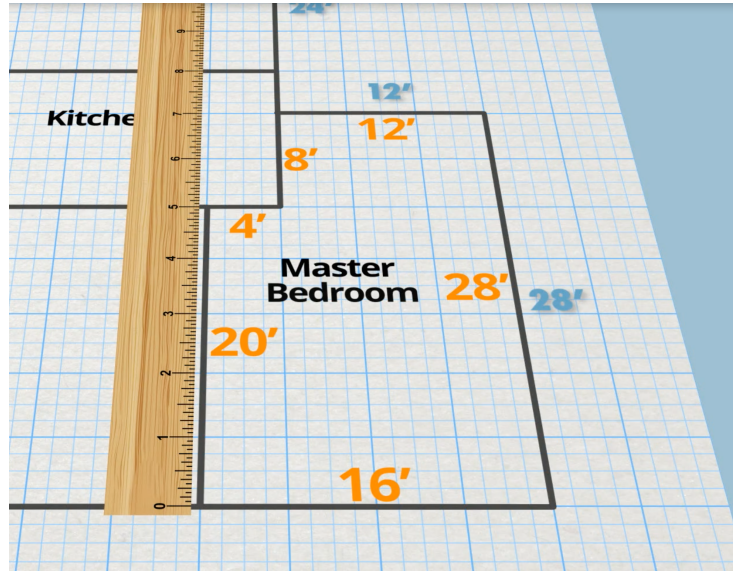
TIP! Please take photos in well-lit area.

- STEP 1:** Photograph House Dimensions on following page. Be sure student and teacher information is filled out before taking picture.
- STEP 2:** Photograph your House Design. Make sure the following is neatly written **name, grade, school** and **1/4 inch = 1 foot**.
- STEP 3:** Email photos to info@ifihadahammer.com
- STEP 4:** In the Subject Line put **DREAM HOME CHALLENGE | SPRING 2023**
- STEP 5:** Include in the email the following info:
 - Student Name**
 - Grade**
 - Teacher Name**
 - Teacher Contact Info**
 - School**

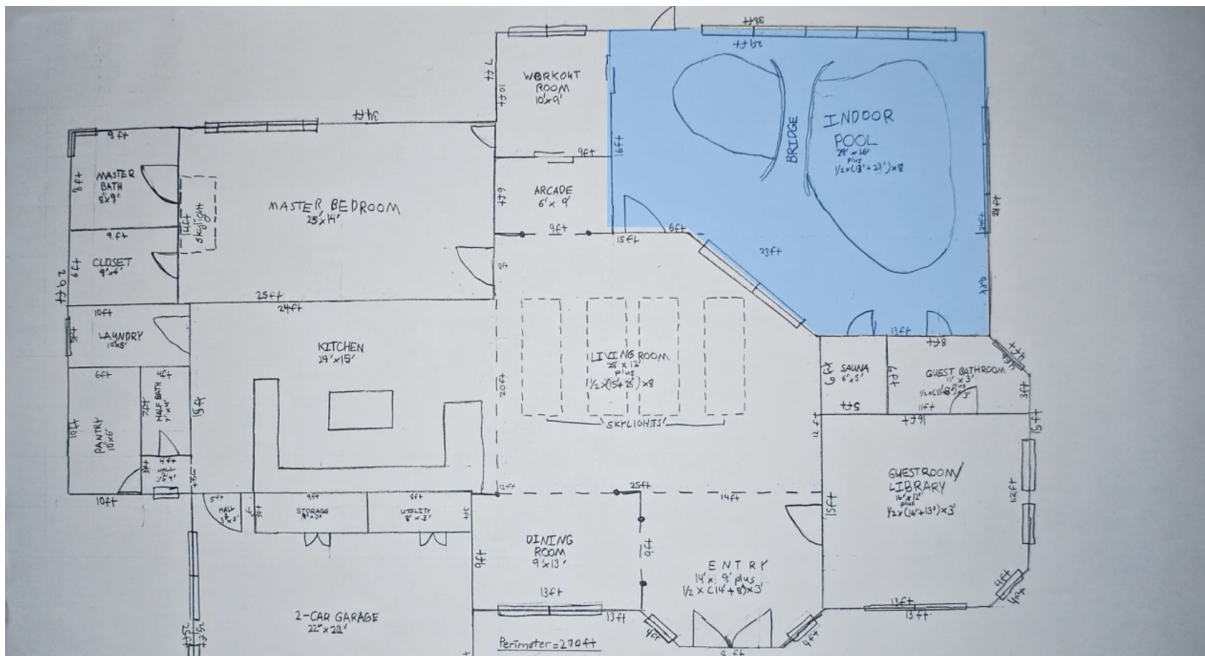
EXAMPLES

ROOM DIMENSIONS ON GRAPH PAPER

Below is an example of room dimensions shown on the graph paper. The below example is a screenshot found in **Lesson 15 | SCALING** in the “Draw your Rooms” section.



NOTE: The example above example was for video illustration purposes. Student should write dimensions using a regular pencil, small and legibly on graph paper as shown below.



EXAMPLES

DIMENSIONS SHEET

Below is an example of a filled out Room Dimensions sheet. The below example is a screenshot found in **Lesson 15 | SCALING** in the “Fill in Your House Dimensions Sheet” section.

TOTAL PERIMETER OF HOUSE: 248 feet

TOTAL AREA OF HOUSE: 3,168 square feet

ROOM	DIMENSIONS	PERIMETER (FT)	AREA (SQ. FT)
Living Room	40' x 20'	120'	800 sqft
Master Bedroom	16', 28', 12', 8', 4', 20'	88'	416 sqft
Kitchen	20' x 40'	120'	800 sqft
Bedroom 2	12' x 16'	56'	192 sqft
Bedroom 3	16' x 16'	64'	256 sqft
Hallway	8' x 24'	40'	192 sqft
Laundry	8' x 12'	40'	96 sqft
Hall Bathroom	8' x 12'	40'	96 sqft
Sunroom	20' x 20'	80'	400 sqft
Garage	24' x 20'	88'	480 sqft

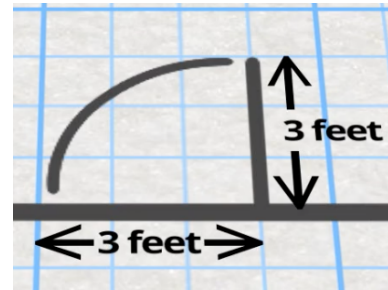
EXAMPLES

DOORS & WINDOWS

The below example is a screenshot found in **Lesson 15 | SCALING** in the “How to Draw Doors and Windows” section.

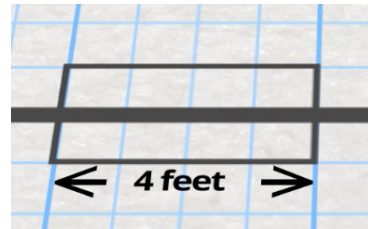
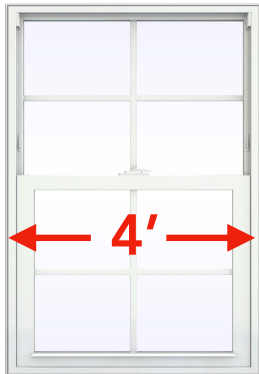
Example:

Standard Door
(Exterior or Interior)



Example:

Window



FREQUENTLY ASKED QUESTIONS

QUESTION: Can students work in teams of 2 or 3?

ANSWER: Yes, but award will be divided between teammates.

QUESTION: Can students design a 2-story house.

ANSWER: Yes, as long as each story is drawn to 1/4" scale on separate 17" x 22" graph paper.